

Radiant Toaster Dual Lane

Model RT-DL

Owner's Manual

Mfg. Number:

9210927



Contents

Overview

Before Use
In Case of Damage
Website

Service/Technical Assistance

In Case of Damage
Equipment Information to Save
Authorized Service Agency

Safety Information

Installation
Maintenance
Service

Specifications

Installation

Plugging in the Power Cord

Operating Instructions

Toasting Product
Adjusting Toast Quality
Quick Eject
Shutting down the Toaster

Menu Options

Toaster Settings
Menu Editing
Factory Reset
Menu Reset
Hi-Limit Reset Button
Error Messages

Maintenance

Quarterly Maintenance
Inspect Conveyor Belt Chain
Measuring Conveyor Belt Chain
Cleaning the Fans
Bottom Fan Cleaning

Conveyor Belt Chain Maintenance

Replacing the Conveyor Belt Chain

Troubleshooting

Wiring Diagram

Relay Mounting

Notes

Limited Warranty

Overview

2 This unit is intended to be used for commercial applications, for example: in kitchens of restaurants, canteens, hospitals and in commercial enterprises such as bakeries, butcheries, etc., But not for continuous mass production of food.

Before Use

3 This manual contains safety, installation, and operating procedures for the unit. Read and understand it completely before installing or operating the unit. Keep this document for reference. If the unit changes ownership, this manual must accompany it.

In Case of Damage

7 If the unit arrives damaged, file a claim with the carrier immediately. Save all packing materials when filing a claim. Freight damage claims are the responsibility of the purchaser and are not covered under warranty.

Website

8 www.antunes.com

Service/Technical Assistance

In Case of Damage

If any parts are missing or damaged, problems with the installation or operation of this product contact Antunes Customer Service immediately at +1-877-392-7856 (toll free).

Fill in the information in the next section and have it ready when calling for assistance. The serial number is on the specification sticker located on the system.

Equipment Information to Save

Purchased from:

Date of purchase:

Model number:

Serial number:

Manufacturing number:

Authorized Service Agency

Name:

Phone No:

Address:

Safety Information

Installation

- Read and understand all instructions before installing or using the unit.
- Install this unit to comply with the basic plumbing code of the Building Officials and Code Administrators, Inc. (BOCA) and the Food Service Sanitation Manual of the Food and Drug Administration (FDA).
- Install and locate the equipment only for its intended use as described in this manual.



WARNING

ELECTRICAL SHOCK HAZARD.
Failure to follow the instructions in this manual could result in serious injury or death.

Do not modify the power supply cord plug. If it does not fit the outlet, have a proper outlet installed by a qualified electrician.

Electrical ground is required on this appliance.

Check with a qualified electrician if you are unsure if the appliance is properly grounded.

Do NOT use an extension cord with this product.

The unit should be grounded according to local electrical codes to prevent the possibility of electrical shock. It requires a grounded receptacle with separate electrical lines, protected by fuses or circuit breaker of the proper rating.

NEVER unplug the power cord while the unit is running. Use the proper shutdown procedure before unplugging the power cord.

Operation

- The unit is furnished with a properly grounded cord connector. Do not attempt to defeat the grounded connector.
- Do not operate the unit if it has been damaged or dropped, if it has a damaged cord or plug, or if it is not working properly.
- Do not block or cover any openings on the equipment.
- Do not immerse the cord, unit, or plug in water.
- Keep the cord away from heated surfaces.
- Do not allow the cord to hang over the edge of a table or counter.
- This appliance is not to be used by persons (including children) with reduced physical, sensory or mental capabilities, or lack of experience and knowledge unless they have been given supervision or instruction.
- Children being supervised are not to play with the appliance.
- Bread may burn. Therefore toasters must not be used near or below curtains or other combustible walls and materials. Failure to maintain safe operating distances may cause discoloration or combustion.

Maintenance

- Do not use abrasive materials; they can damage the unit's stainless steel finish.
- Do not use corrosive chemicals in this equipment.
- Chlorides or phosphates in cleaning agents (e.g., bleach, sanitizers, degreasers, and detergents) can permanently damage stainless steel equipment. The damage is usually in the form of discoloration, dulling of the metal surface finish, pits, voids, holes, or cracks. This damage is permanent and is not covered by warranty.
- Always use a soft, damp cloth for cleaning. Rinse with clear water and wipe dry. When required, always rub in the direction of metal polish lines.
- Routine cleaning should be performed daily with soap and water.
- Rub off finger marks and smears using soap and water.
- Do not clean unit or components in a dishwasher unless specifically specified in the cleaning instructions.
- Do not clean the unit with a water jet or steam cleaner.

Service

- Inspection, testing, and repair of electrical equipment must be performed only by qualified service personnel.
- To avoid possible personal injury and/or damage to the unit, all inspections, tests, and repair of electrical equipment should be performed by qualified personnel ONLY. Contact Antunes Technical Service for adjustment or repair.
- Turn the power off, unplug the power cord, and allow unit to cool to room temperature before performing any service or maintenance.
- If the supply cord is damaged, it must be replaced by the manufacturer, its service agent, or a similarly qualified person in order to avoid an electrical hazard.
- Cleaning and user maintenance shall not be made by children without supervision.

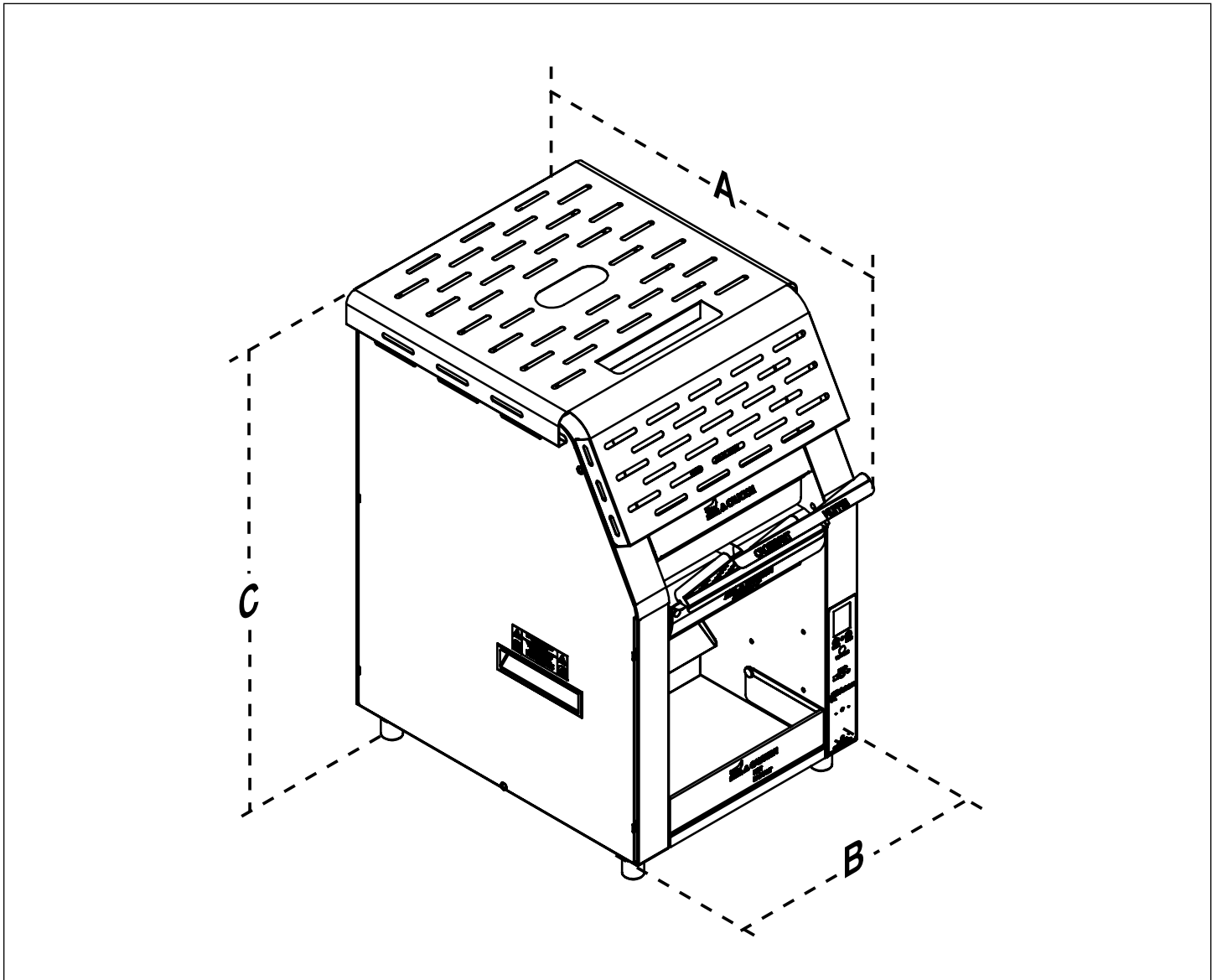
Specifications

Dimensions

Model	Width (A)	Depth (B)	Height (C)
9210927 RT-DL	23" (58.42 cm)	15.16" (38.5 cm)	24.39" (61.95 cm)

Electrical Ratings

Model	Volts	Watts	Amps	Hertz	Plug Description
9210927 RT-DL	208~	5000	24	50/60	L6-30P Twist Lock



Installation

NOTE: When placing the toaster into service, make sure to provide at least 3 inches of space on all sides of the unit.

1. Remove unit and all packing materials from shipping carton.

NOTE: If any parts are missing or damaged, contact Antunes Technical Service IMMEDIATELY at 1-877-392-7854 or 1-630-784-1000.

2. Remove all packing materials and protective coverings from the unit.
3. Remove all accessories Wash these items at the 3 compartment sink and set aside to air dry
4. Wipe all surfaces of the unit with a hot damp cloth.

NOTE: Do NOT use a dripping wet cloth. Wring out before use.

5. Re-install the Crumb Tray and Bun Chute.

When placing the unit into service, pay attention to the following guidelines:

- Make sure the power switch is off and the unit is at room temperature before plugging in the power cord.
- Do not block or cover any openings on the unit.
- Do not immerse the power cord or plug in water.
- Keep the power cord away from heated surfaces.
- Do not allow the power cord to hang over edge of table or counter.

Plugging in the Power Cord

If you are using an electrical outlet located on a wall, you **MUST** route the power cord through the two clips on the back of the unit as shown below.

If you are using a ceiling-mounted outlet, you do not need to route the power cord through the clips.

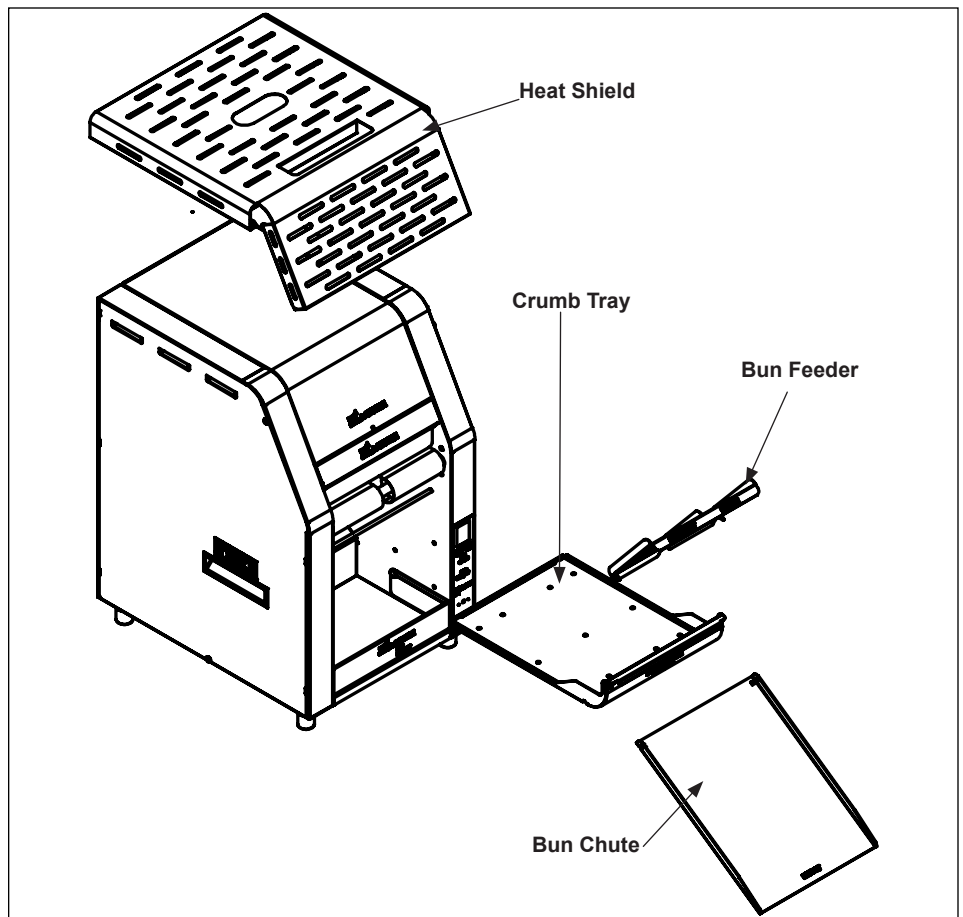
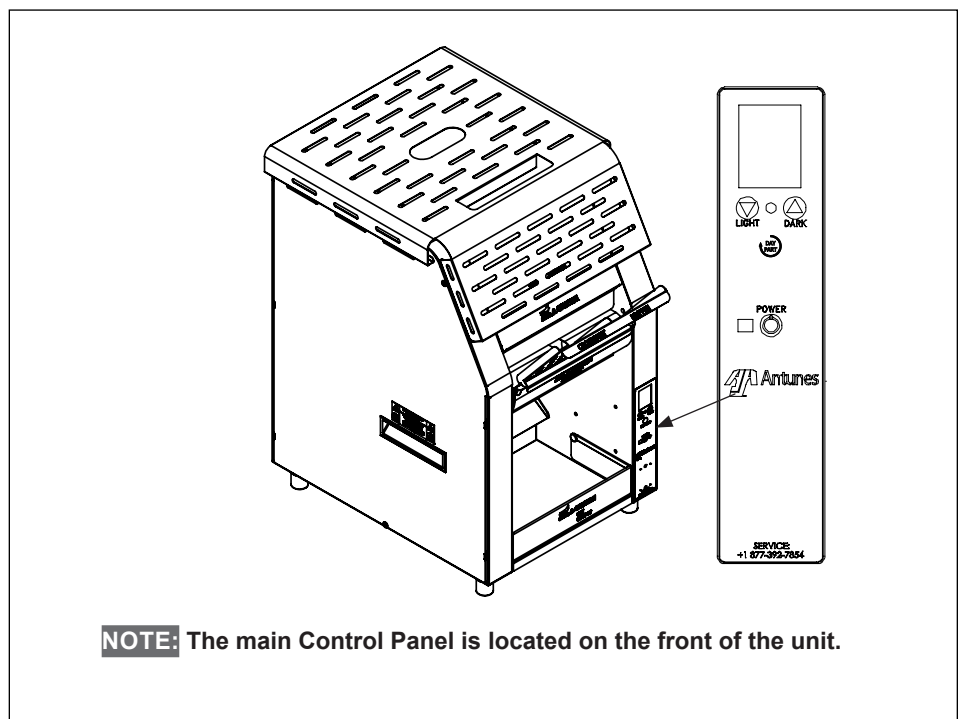


Figure 1. Components



NOTE: The main Control Panel is located on the front of the unit.

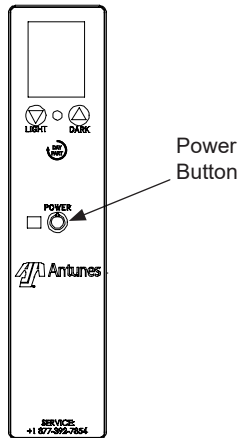
Figure 2. Control Panel

Operating Instructions

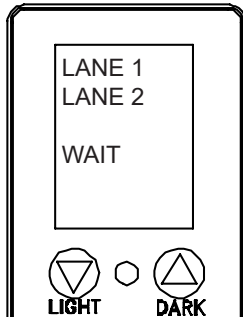
NOTE: To ensure proper operation, toast some test product at the start of each day.

NOTE: If the toasting quality needs adjustment, refer to Adjusting Toasting Quality in the Operation section of this manual.

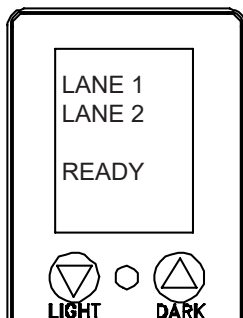
OFF is displayed on the screen when the unit is plugged in and powered off.



1. On the front of the toaster, press and hold the power button to turn the toaster on. The unit will wake a clicking sound. This is normal.



2. The unit displays the software version and starts to warm up (approximately 10 minutes)



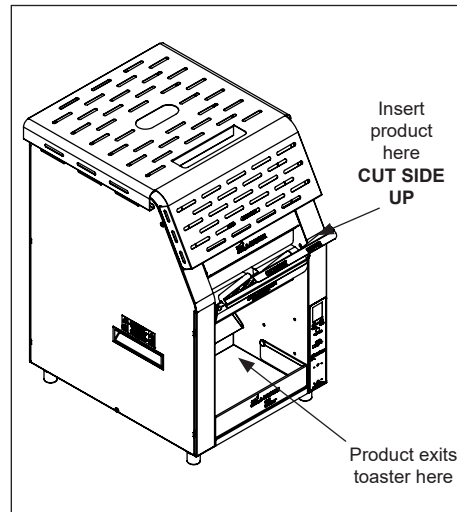
3. The unit displays the "LANE 1 LANE 2 READY" message when it reaches proper operating temperature.

Toasting Product

1. Facing the front of the unit, insert product as described.

Insert product in the Feeder with the cut side up.

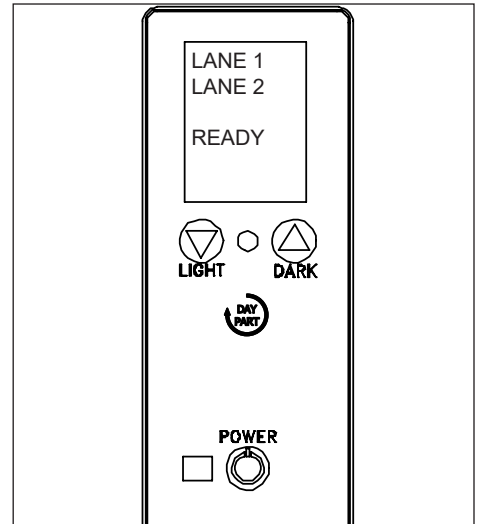
Refer to the image below:



Adjusting Toast Quality

The unit can be adjusted to provide a lighter or more darkly toasted product only when ready.

Follow these steps to adjust toasting quality:



Press the **Light** or **Dark Button** briefly to view the current setting. Press and hold the Light or Dark button for 5 seconds to enter edit mode.

Use the **Light** and **Dark Arrow** buttons to adjust the toasting quality to darker or lighter respectively.

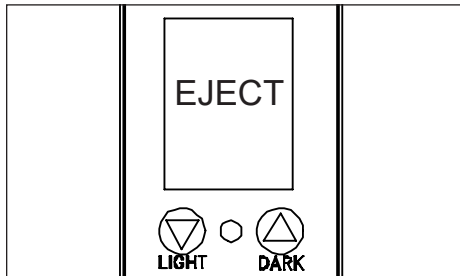
NOTE: The **UP Arrow (Dark button)** increases toasting darkness. The **DOWN Arrow (Light button)** decreases toasting darkness.

When the toaster is set as desired, release the buttons and the toaster will beep and save the settings to memory.

NOTE: This setting is maintained when the unit is powered off.

Quick Eject

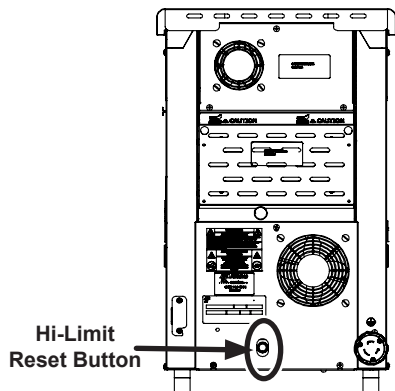
If you need to eject product from the toaster, press and hold both the **Light** and **Dark** buttons. The Eject message appears on the display and the toaster speeds up, ejecting the product.



Shutting down the Toaster

Follow these steps to shut down the toaster:

1. Press and hold the Power button.
2. The unit enters cool down mode and displays **OK to Clean**. The fans continue to run. The unit shuts down completely when this cool down mode completes.



Hi-Limit Reset Button

A hi-limit control (rear of unit) turns off power to the unit if it overheats. To reset this Hi-Limit control, allow sufficient time (10-15 minutes) for the unit to cool down, then remove the Hi-Limit control cap and press the reset button located on the rear of the unit. If the unit requires continuous resetting, call for service.

Error Messages

If the toaster encounters an operating error, the unit displays **FAULT** and beeps. When this happens:

1. Press the Day/Part button to display the active error code.
2. Write down the error code and refer to the Troubleshooting section of this manual.

Menu Options

Toaster Settings

The following tables shows the recommended settings for the toaster:

Setting	Value
IR Percent Upper	85%
IR Percent Lower	15%
Convection	15%
Lane 1	176
Lane 2	413

Menu Editing

To enter the Menu press and hold the Day/Part button until the screen changes. Use the Light and Dark buttons to navigate through the options.

These settings include:

Display Reads	Description
IR TOP	Top heater %
IR BOT	Bottom Heater %
CONV	Convection %
LANE 1 SET TOAST COLOR	Left Side Toast Color
LANE 1 CONVYR TIME SECONDS	Left Side Conveyor Time
LANE 2 SET TOAST COLOR	Right Side Toast Color
LANE 2 CONVYR TIME SECONDS	Right Side Conveyor Time
LANE 1 MOTOR LOAD	Left Motor Load
LANE 2 MOTOR LOAD	Right Motor Load
SET UNITS	°F or °C
BOARD TEMPS MA 1M 2M	Internal Board Temperature
TEMPS IR/ CONV	Operating Temperatures
RUN TIME	Total Run Time Displayed as: Days, Hours, Minutes
ERROR	Error Messages (Up to 8 messages stored)

NOTE: 1M refers to Lane 1 Motor and 2M refers to Lane 2 Motor.

Factory Reset

To reset, the unit to original factory setting, follow these steps:

1. Turn the unit off
2. Press and hold the **Day** and **Dark Arrow** buttons together while turning the unit on. Continue holding the buttons.
3. When the unit displays **Factory Reset**, release the buttons.

Menu Reset

This option is applicable if your unit has been updated with new default settings via USB. If you have changed the settings since the update follow these instructions to return the unit to the USB default settings:

1. Turn the unit off
2. Press and hold the **Light** and **Dark Arrow** buttons together while turning the unit on. Continue holding the buttons.
3. When the unit displays **Menu Reset**, release the buttons.

Maintenance

WARNING

The unit will remain hot while it is cooling down. Personal injury and burns may result from touching the unit before it is finished cooling down. Wear Heat Resistant Gloves.

Cleaning the Accessories and Toaster

1. Turn the toaster off. The fans and conveyors continue to run. The cleaning mode continues for 20 minutes and shuts the unit down automatically when complete.

NOTE: Count down does not need to finish before continuing.

2. Refer to Figure 3 Remove Crumb Tray and Bun Chute and set aside.
3. Wash the Crumb Tray and Bun Chute in soap and water. Rinse with clean water and allow to air dry.

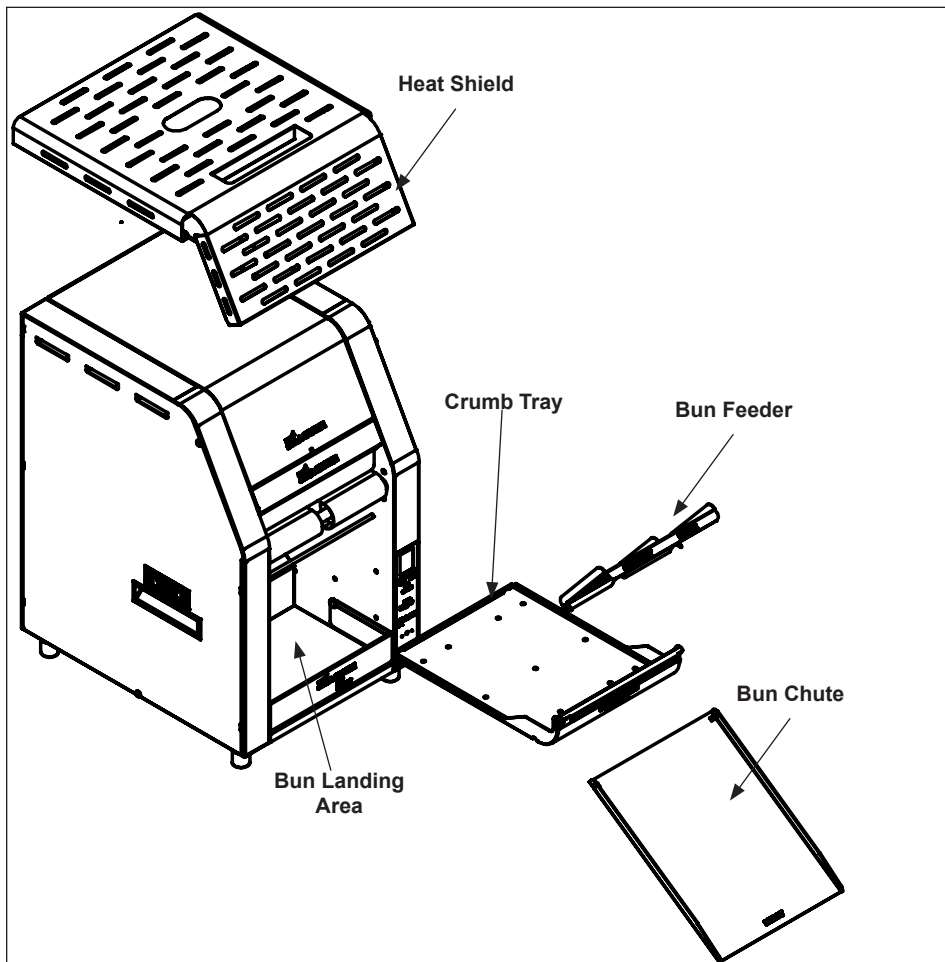


Figure 3. Clean the unit and accessories

4. Wipe all surfaces of the unit with a hot damp cloth.

NOTE: Do not use a dripping wet cloth. Wring out before use.

5. Wipe the bun landing area and Skirt Weldment with a hot damp cloth (Figure 3).

Quarterly Maintenance

Perform the steps in the **Daily Maintenance** section of this manual.

Inspect Conveyor Belt Chain

Inspect the Conveyor Belt Chain to ensure it is in good condition and is free of damage.

Check the tension on the Conveyor Belt Chain. If the belt is sagging significantly or is dragging on the Crumb Tray Reflector, remove one or two links from the chain. Refer to the section titled **Adding/Removing Conveyor Belt Chain Links** for instructions.

Measuring Conveyor Belt Chain

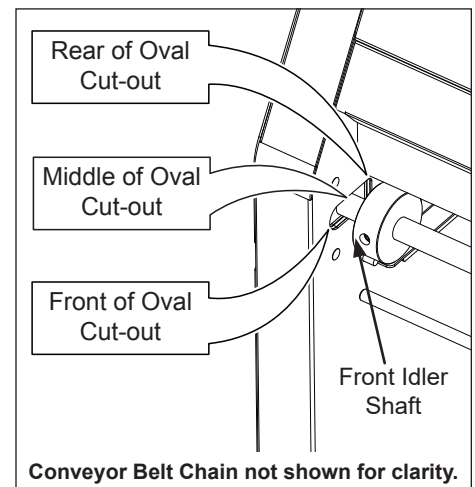
1. Turn the toaster off. The unit enters a 20 minute cool down mode and displays OK to Clean when complete. The fans and conveyors continue to run. The cleaning mode continues for 20 minutes and shuts the unit down automatically when complete.
2. Remove the Crumb Tray.
3. See the image below. Facing the front of the toaster, locate the front Idler Shaft. The Idler Shaft should be in the middle of the oval cut out.

If the shaft is towards the front, remove a link.

If the shaft is towards the back, add a link.

If the shaft is in the middle, no action is needed.

If you need to add or remove a link, refer to the section titled **Adding/Removing Conveyor Belt Chain Links** in this manual.



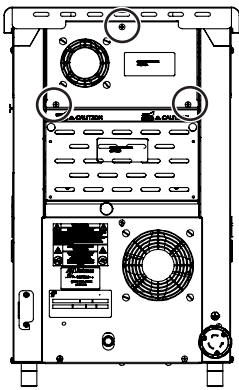
Cleaning the Fans

Top Fan Cleaning

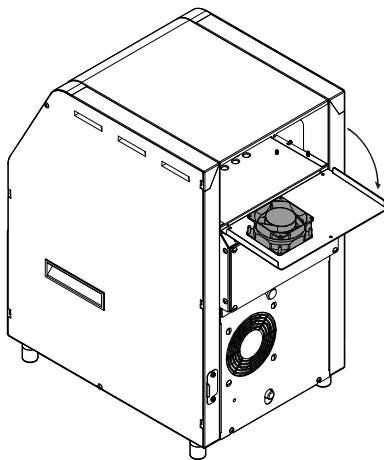
1. Turn the toaster off. The unit enters a 20 minute cool down mode and displays OK to Clean when complete. The fans and conveyors continue to run. The cleaning mode continues for 20 minutes and shuts the unit down automatically when complete.

NOTE: Be sure to wait until the unit shuts down before proceeding.

2. Facing the rear of the toaster, remove the three screws circled in the image below with a Phillips head screwdriver. Set the screws aside.
3. Rotate the Top Rear panel down to gain access to the top cooling fan.
4. Clean the cooling fan with a small plastic brush or a clean dry cloth. Be sure to remove all debris from the fan blades.

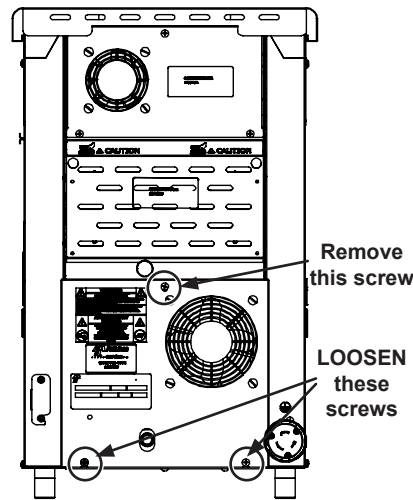


5. Close the Top Rear panel and secure with the 3 screws.
6. Wipe the exterior portion of the top fan with a clean, damp towel. Make sure the fan opening is clear of any debris or obstructions.

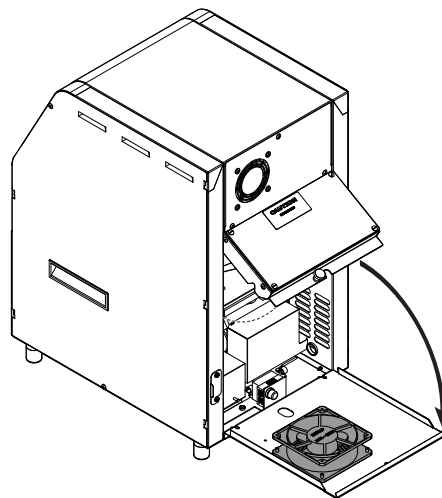


Bottom Fan Cleaning

1. Refer to the image below. Remove the top circled screw and set aside. Then, loosen but do not remove the 2 bottom circled screws.
2. Lift the Rear Door to open (image below) and then lift up the Bottom Rear panel and rotate it so the bottom fan is accessible.
3. Clean the bottom cooling fan with a small plastic brush or a clean dry cloth. Be sure to remove all debris from the fan blades.
4. Place the Bottom Rear panel back into place, close the Rear Door, and secure the Bottom Rear Panel with screws.



5. Wipe the exterior fan opening with a clean, damp towel. Make sure the fan opening is clear of any debris of obstructions.



Conveyor Belt Chain Maintenance

Links from the Conveyor Belt Chain can be removed or added to keep the Conveyor Belt Chain at the right tension.

1. Turn the toaster off. Unplug the power cord, and allow the unit to cool.
2. Put on heat resistant gloves and remove the Crumb Tray and Bun Chute.
3. Push the front of the Conveyor Shaft in and down so it locks into place. This removes tension from the Conveyor Belt Chain. Make sure both sides are locked in the in and down position.
4. Remove or add links as required. See figure 4.
5. Lift the front of the Conveyor up and out to restore tension to the Conveyor Belt Chain.
6. Re-install the Crumb Tray and Bun Chute.
7. Plug in the power cord and turn the unit on.

Replacing the Conveyor Belt Chain.

Before you replace the Conveyor Belt Chain, make a note of how the existing chain is installed. The replacement chain must be installed in the same manner.

NOTE: The chain **MUST** be installed with the hooks facing the direction of travel.

1. Turn the toaster off, unplug the power cord and allow the unit to cool.
2. Put on heat resistant gloves and remove the Crumb Tray and Bun Chute.
3. Push the front of the Conveyor Shaft in and down so it locks into place. This removes tension from the Conveyor Belt Chain. Make sure both sides are locked in the IN and DOWN position.
4. Disengage the conveyor belt chain from both sides (Figure 4).
5. Remove the Conveyor Belt Chain and discard.
6. Refer to Figure 4 and install the new Conveyor Belt Chain around the sprockets.
7. Install the new Conveyor Belt Chain. The chain **MUST** be installed with the hooks facing the direction of travel.
8. Lift the front of the Conveyor up and out to restore tension to the Conveyor Belt Chain.
9. Re-install the Crumb Tray and Bun Chute.
10. Plug in the power cord and turn the unit on.

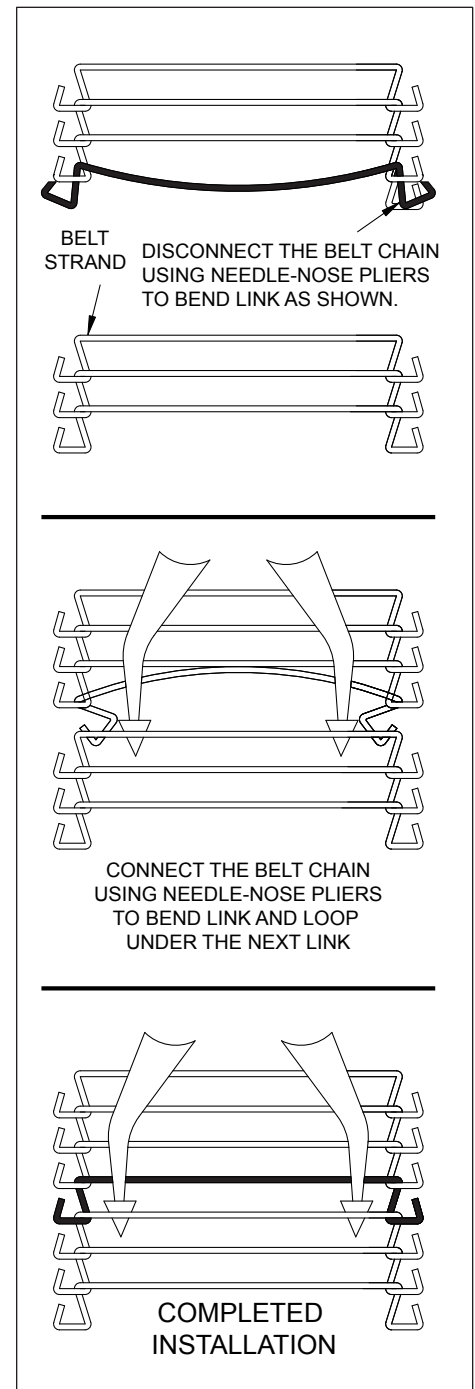


Figure 4. Disconnecting Conveyor Chain

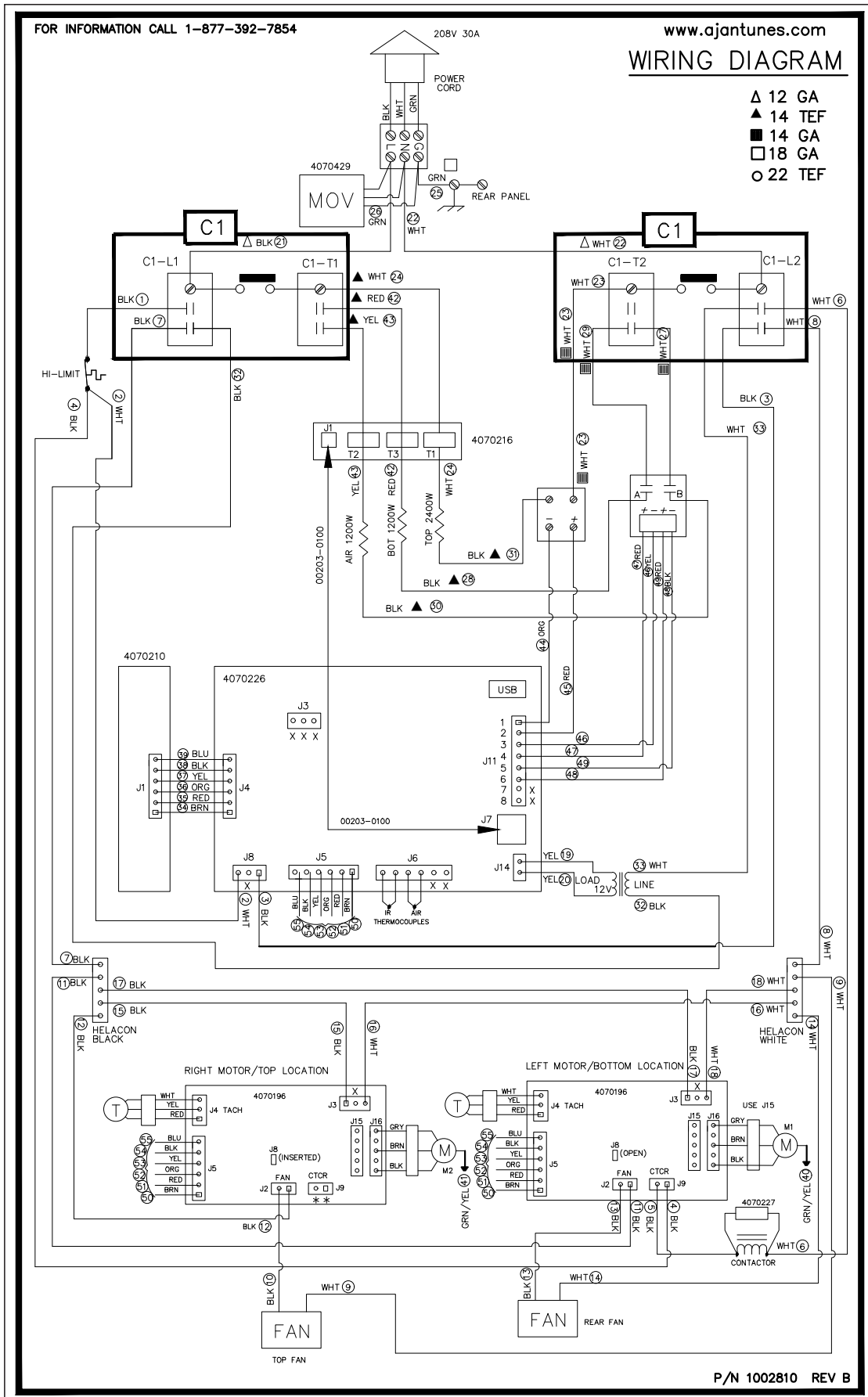
Troubleshooting

Problem	Possible Cause	Corrective Action
No Control Display	Power cord not plugged in	Plug power cord into the proper electrical outlet
	Hi-Limit has tripped	Allow unit to cool and reset the Hi-Limit Control. If it trips again, contact your Maintenance person or Antunes Technical Support at +1-877-392-7854 (toll free) for assistance.
	Circuit breakers turned off or tripped. Damaged electrical outlet, plug, or cord. Power switch damaged	Reset circuit breakers. If they trip again, check the power cord, plug, and outlet for damage. Contact your Maintenance person or Antunes Technical Support at +1-877-392-7854 (toll free) for assistance.
	Faulty or misaligned communication cable	Replace or align communication cable
	Faulty Transformer	Replace transformer.
Conveyor does not turn on	Conveyor Belt/Chain has stretched. Chain skipping on sprockets.	Measure and adjust the conveyor belt chains as described in the Maintenance section of this manual.
	Loose sprocket	Verify setscrew is tight on flat part of shaft.
	Motor Drive Chain came off sprocket(s)	Reinstall drive chain.
	Internal part /object interfering within conveyor system	Check for interference & clear up as necessary.
	Drive chains need lubrication.	Lubricate chain.
	All Stop Button was pressed	The toaster will beep until the All Stop button is pressed again and the power button is pressed.
Conveyor(s) hesitate	Loose or misaligned sprocket	Align and tighten set screw on sprocket
	Motor drive chain loose or stretched	Replace or tighten up slack on drive chain.
	Drive motor(s) have failed	Contact your Maintenance person or Antunes Technical Support at +1-877-392-7854 (toll free) for assistance.
Product must be forced into the toaster. Buns sticking and burning.	Teflon coated platen dirty.	Clean Platen as described in the Maintenance section of this manual.
	Conveyor Belt/Chains are skipping on sprockets.	Adjust the conveyor belt chains as described in the Maintenance section of this manual.
	Drive motor stalls intermittently.	Contact your Maintenance person or Antunes Technical Support at +1-877-392-7854 (toll free) for assistance.
Toaster making unusual sounds	Conveyor belt chains have stretched or adjusted incorrectly.	Adjust the conveyor belt chains as described in the Maintenance section of this manual.
	Motor Drive chain needs lubrication.	Lubricate chain
	Conveyor shaft bearing is binding.	Contact your Maintenance person or Antunes Technical Support at +1-877-392-7854 (toll free) for assistance.
Fans are making an unusual sounds	Failed cooling Fans	Verify vents on toaster are unblocked and not near other heating appliances. Clean Fans. If error persists contact your maintenance person or Authorized Service Agency for service.
	Cooling Fans are dirty and need to be cleaned	
Product getting caught in bun chute area	Bun chute installed incorrectly	Reinstall Bun chute with lip end facing down towards exit.
Display reads HI-LIM	Hi-Limit has tripped.	Allow sufficient time (10-15 minutes) for the unit to cool down. Remove the Hi-Limit control cap at the rear of the unit. Press the Hi-Limit Reset button. Turn the unit on and test the unit by toasting some test product. If the Hi-Limit continues to trip, Contact Antunes Technical Support at +1-877-392-7854 (toll free) for assistance.

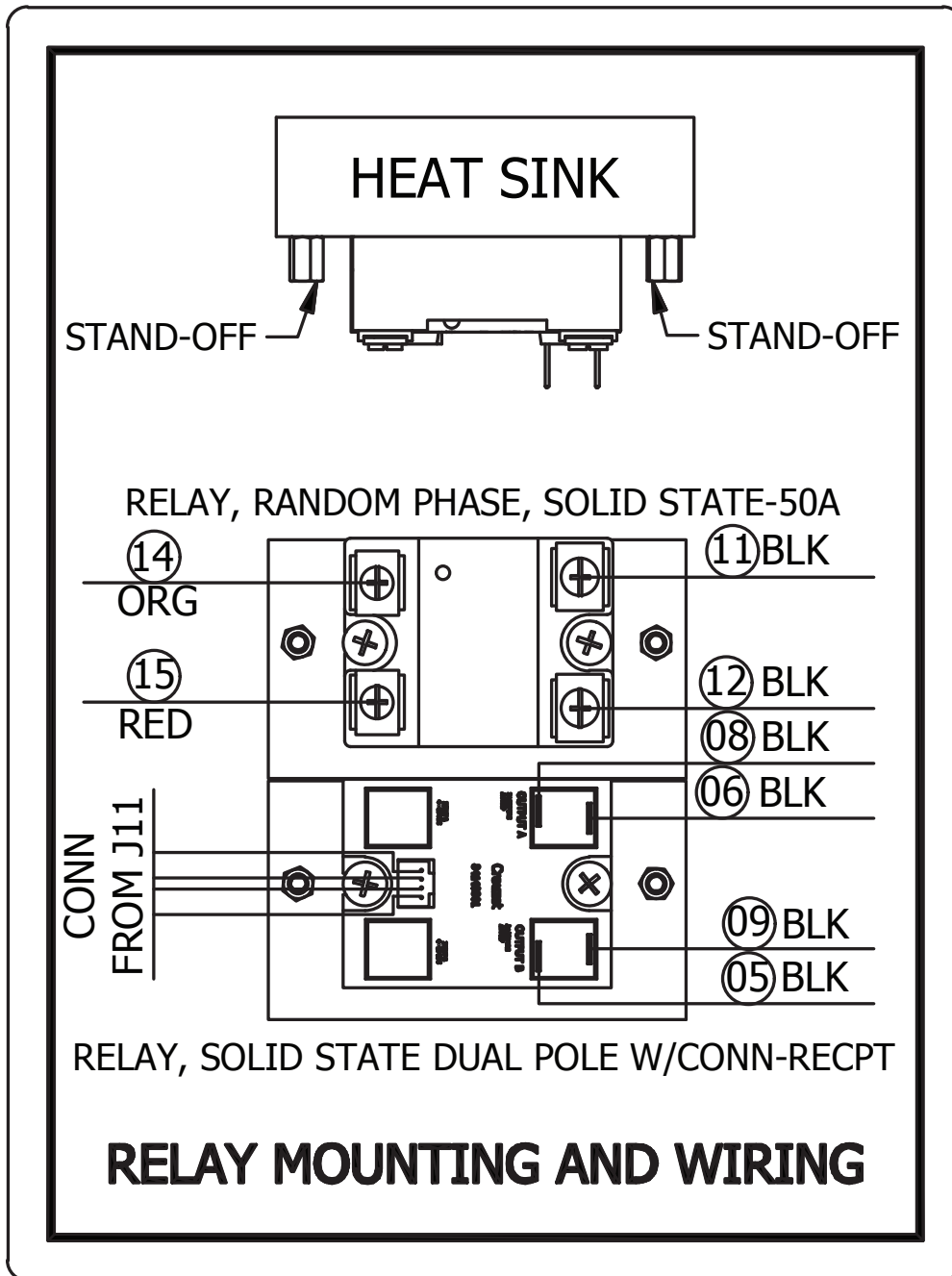
Troubleshooting Continued

Problem	Possible Cause	Corrective Action
Display reads M1LOAD	A mechanical obstruction has occurred that is slowing down the conveyor motor.	Check the bottom wire conveyor and surrounding areas for any obstructions/jams. Contact Antunes Technical Service at +1-877-392-7854.
Display reads M2LOAD	Wire Conveyor Belt is too loose/sagging & getting jammed.	If sagging is noticeable, remove the necessary links to shorten the Wire Conveyor Belt. Refer to the Maintenance section in this manual. Contact Antunes Technical Service at +1-877-392-7854.
Display Reads TOPTMP	Toaster electrical compartment is overheating due to the lack of airflow surrounding the toaster.	Inspect the cooling at the top and at the bottom (back of unit) and ensure it is clean according to the fan cleaning portion of the Maintenance section of this manual. Make sure the unit has enough space on both sides and the rear of the unit according to the Installation section of this manual. If the condition continues, contact Antunes Technical Service at +1-877-392-7854.
Display Reads CONTMP		
Display Reads M1TEMP		
Display Reads M2TEMP		
Display Reads TOPSSR	Failed Heater or Solid State Relay	Contact Antunes Technical Service at +1-877-392-7854
Display Reads BOTSSR		
Display Reads CONSSR		
Display Reads TOPHTR		
Display Reads BOTHTR		
Display Reads CONHTR		
Display Reads TOPTC		
Display Reads CONVTC		
Display Reads TOPTMP		
Display Reads CONTMP		
Display Reads CONFAN	Top thermocouple temp greater than 225°	Check top cooling fan for obstruction or, if dirty, clean.

Wiring Diagram



Relay Mounting



Replacement Parts List

(See Exploded Views for more information)

NOTE

Use only genuine Antunes replacement parts in this unit. Use of parts other than those supplied by the manufacturer will void the warranty.

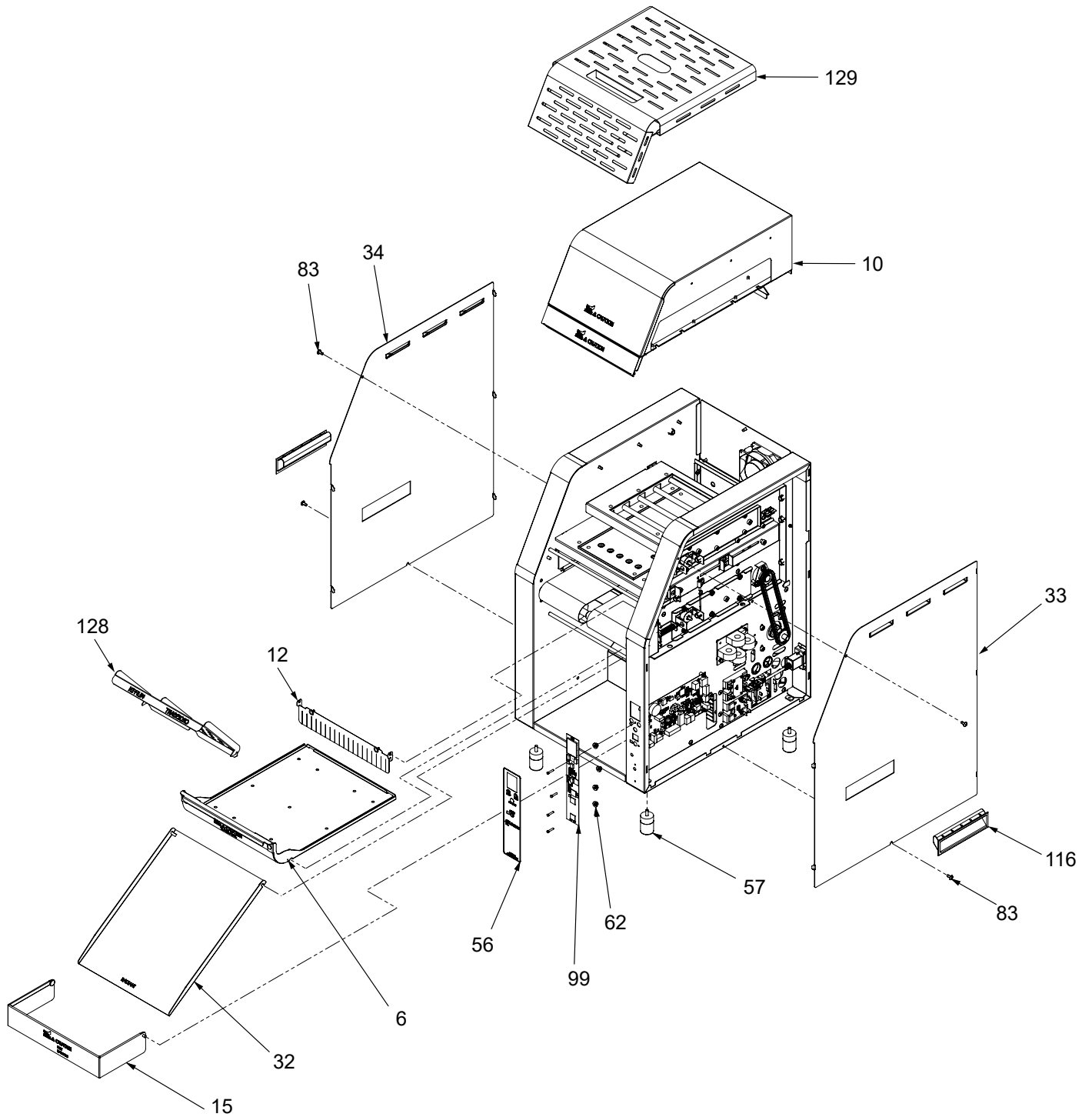
Item #	Part #	Description	Qty.
1	0012994	Assembly, Bearing Cover	2
2	0014177	Motor Board Assembly End Side	1
3	0014178	Motor Bracket Assembly Control Side	1
4	0014181	Bracket & Motor Assembly	1
5	7002167	Back Panel Assy Kit	1
6	0014203	Crumb Tray Assembly	1
7	0014204	Contacto Bracket Assembly	1
8	7002165	Top Heater IR Assy Kit	1
9	7002166	Bottom Heater Assy Kit	1
10	0014216	Assembly, Top Cover	1
11	7002164	Convection Heater Assy Kit	1
12	7002144	Curtain Assembly Kit	2
13	0021898	Bearing Bracket & Spring Guide - RH	1
14	0021899	Bearing Bracket & Spring Guide - LH	1
15	0021975	Skirt Weldment	1
16	0022371	Control Housing Weldment	1
17	0022372	End Housing Weldment	1
18	0022373	Ramp Weldment	1
19	0022374	Back Panel Weldment	1
20	0022375	Weldment, Tube & Roller - Rear (7002168)	1
21	0022376	Weldment, Tube & Roller	1
22	0400147	Bushing, Shorty 7/8"	3
23	040P265*	Bushing, Open/Closed-3/8"	12
24	0400414	Insulator, 1/2" Ceramic Female	6
25	0400459	Spacer, 1.125 OD X .25 ID X .03 Thick	4
26	0400463	Contacto Cover	1
27	0400470	Heater Insulator	1
28	0400594	Cover, Motor Board	1
29	0502900	Sensor Bracket	1
30	0506612	Tensioner Plate	1
31	0506743	Fan Access Cover	1
32	0506786	Bun Ramp	1
33	0506789	Control Housing Panel	1
34	0506790	End Housing Panel	1
35	0506791	Heater Cover	1
36	0506792	Heater Base	1
37	0506799	Retainer, Bearing	2
38	0507073	Bracket, USB Mounting	1
39	0507175	Retainer, Heating Element	6
40	0507181	Retainer, Heater Element	2

Item #	Part #	Description	Qty.
41	0507194	Cover, USB	1
42	0507232	Retainer, Capillary Bulb	1
43	0510764	Plate, Reflector Bottom Heater	1
44	0510767	Bracket, Bottom Reflector	1
45	0510784	Plate, Tensioner .625 ID	1
46	0510788	Reflector, RH	2
47	0600158	Spring, Roller Tension	2
48	0701113	Wire Set (Not Shown)	1
49	0800463	Rod, 1/4 X 10"	2
50	100P900*	Label, Service Warning	3
51	1001192	Label, Caution "HOT"	1
52	1001213	Label, Shock Hazard	2
53	1001591	Label, Chain Tensioning	1
54	1001594	Label, Relay Wiring	1
55	1002810	Label, Wiring Diagram	1
56	7002161	Label, Control	1
57	210K230*	Bumper, recess w/ Washer	4
58	2100334	Thrust Strip	2
59	2110197	Clip, Steel Cable	1
60	2120143	Spacer	5
61	2120147	Spacer, Leg	4
62	2120150	Washer, Nylon Flat #8	8
63	2120319	Spacer, Aliminum ID 5/8"	2
64	2150254	Roller	2
65	2150277	Sprocket, Drive 17 Tooth	2
66	7002155	Left Drive Chain Kit	1
67	2150487	Drive Shaft (7002168)	1
68	2150488	Shaft Idler, Front	1
69	7002156	Right Drive Chain Kit	1
70	2152067	Bearing, 5/8ID X 1-1/8OD	2
71	2152068	Sprocket,25B14 5/8 Bore	1
72	218P145*	Cover, Bumper	1
73	3010101	Weld Nut-Twin #8-32	1
74	304P105*	Nut, Hex 'KEPS' #4-40 Zinc	1
75	3040123	4-40 x .38 LG PAN Head Phillips	2
76	306P130*	Nut, Hex"KEPS" #06-32 Steel; Zinc Plated	1
77	3060180	Machine Screw Truss Head Phillips #6-32X 1/4"	7
78	308P101*	8-32 Hex Nut Stainless Steel	1
79	3080115	Machine Screw #8-32 X 3/8"	2
80	308P124*	8-32 x .5 LG Round Head One-Way	1
81	308P143*	Nut, Hex 'KEPS' #8-32	1
82	3080193	Machine Screw #8-32 X 1 1/4" SLTFLTHD	2
83	308P203*	Screw #8-32 x 3/8 w/ Int Washer	6
84	308P227*	Machine Screw #8-32 X 3/8 HXHD SLTD	1
85	3080344	"Stand-Off SS 8-32 X 3/8" Male/ Female"	4
86	310P109*	Machine Screw #10-32 X 3/8	4
87	3100110	Machine Screw #10-32 X 1/2"	4

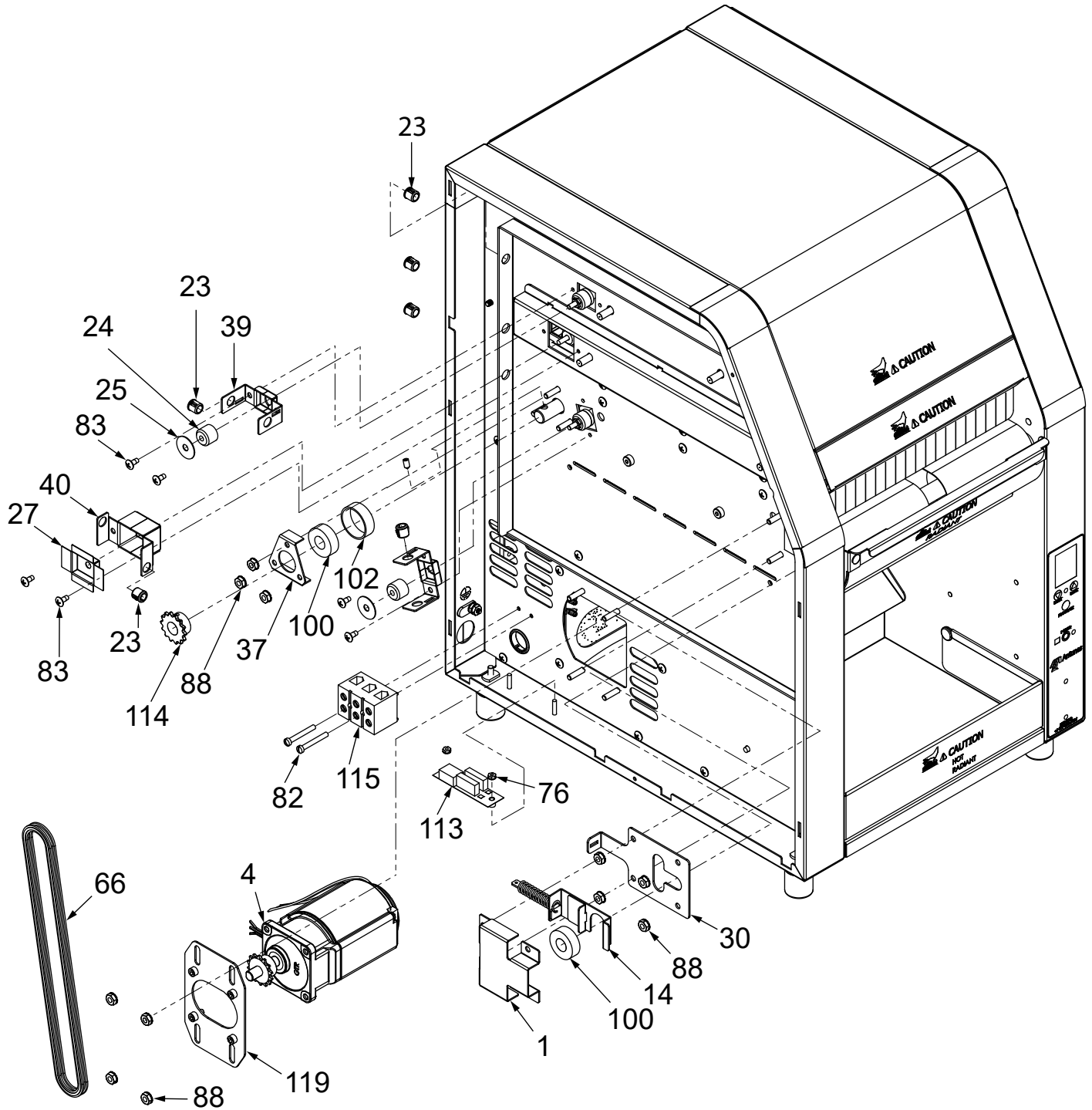
Item #	Part #	Description	Qty.
88	310P146*	Nut, Hex"KEPS" #10-32	20
89	310P180*	Machine Screw #10-32 X 1-3/4, SLPANHD	4
90	3100187	Set Screw #10-32 X 3/8 Hex-Socket	7
91	3100199	SCR, #10-32 X 3/8 LG Socket Head (7002157)	19
92	310P204*	Screw, FHPH, #10-32 X 1/4 LG	2
93	3100215	Shoulder Screw #10-32 W/ 1/4"	2
94	3100220	Set Screw, Cup Point #10-32X5/8	1
95	4050234	Thermocouple, Type K (Open End)	1
96	4060234	Wire Strap - 3/8"	2
97	4060374	Grounding Lug	1
98	4060451	USB, Panel Mount	1
99	7002159	Display Board Kit	1
100	7000224	High Temp Bearing 1/2" BORE	2
101	7000913	Fan, Axial - 230V, Metal Housing	1
102	7001004	Spacer, Bearing	2
103	7002160	Conveyor Kit	2
104	4070431	ASY-PCB, Radiant Toaster	1
105	7001090	Thermocouple Probe	1
106	7001138	Assembly, PCB-Current Sense Board	1
107	7001142	Relay, S.S. Dual Pole	1
108	7001143	Relay, Random Phase, Solid State	1
109	7001145	Transformer, 240 V/12VAC	1
110	7001146	Blower Fan	1
111	7001210	Heat Sink	2
112	7001339	Thermostat, Hi-Limit	1
113	7001528	Varistor Board	1
114	7001595	Sprocket ,25B14 1/2 Bore	1
115	7001609	Terminal Block S-Series	1
116	7001611	Handle, Pull, Snap-In	2
117	7001016	Power Cord	1
118	"00203- 0100"	Cable Assembly, 22"	1
119	7002157	Motor Bracket Kit	1
120	7002158	Air Heater Probe Kit	1
122	7002162	Bun Feeder Kit	1
123	7002163	Heat Shield Kit	1
124	7002164	Coventional Heater Assy Kit	1
125	7002165	Top Heater Assy Kit	1
126	7002166	Bottom Heater Assy Kit	1
127	7002168	Drive Shaft Kit	1
128	7002169	Idler Shaft Kit	1
129	0511712	Rear Drive Roller	1

*Indicates parts must be purchased in packs of 10.

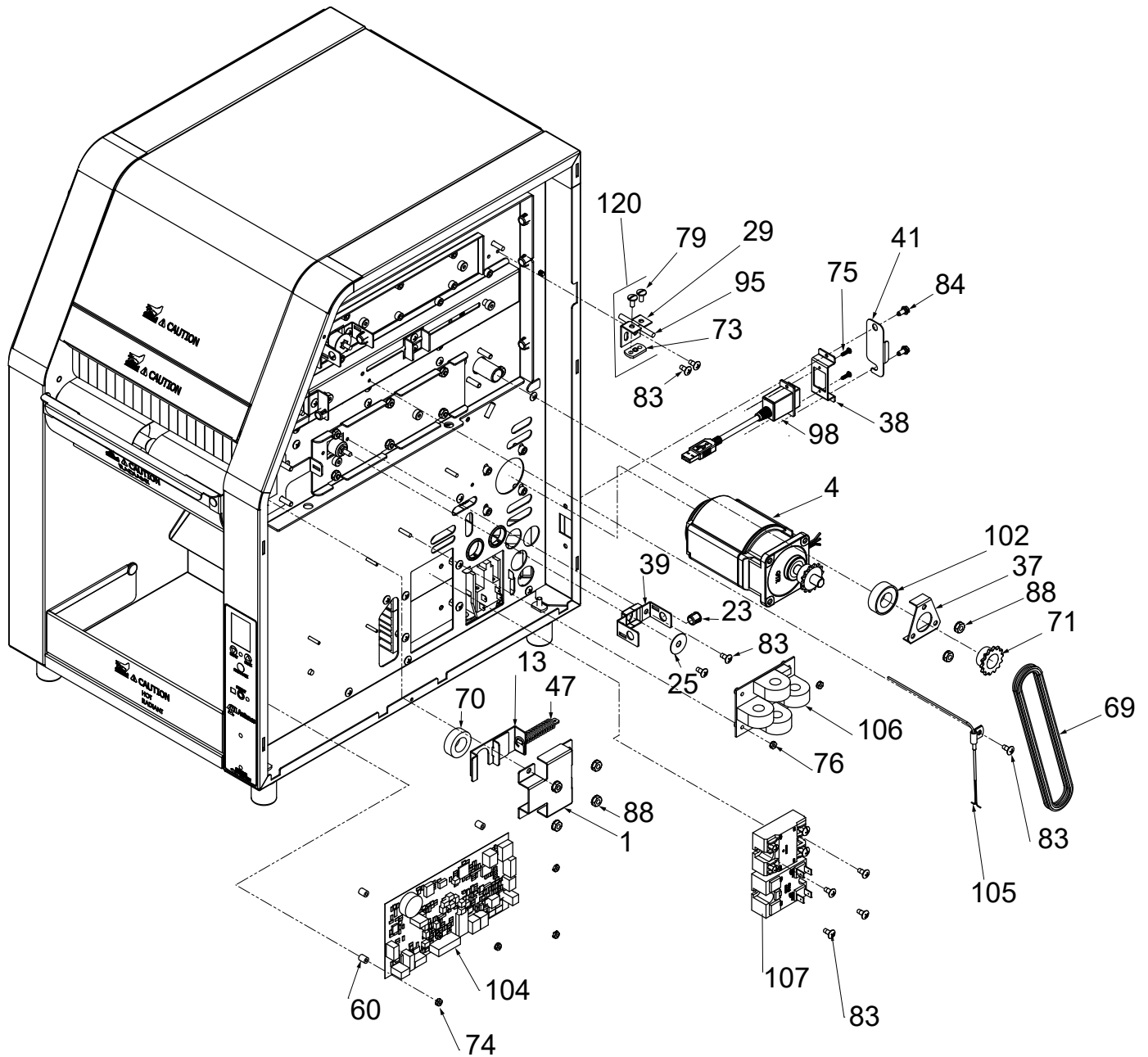
Exploded Diagram #1



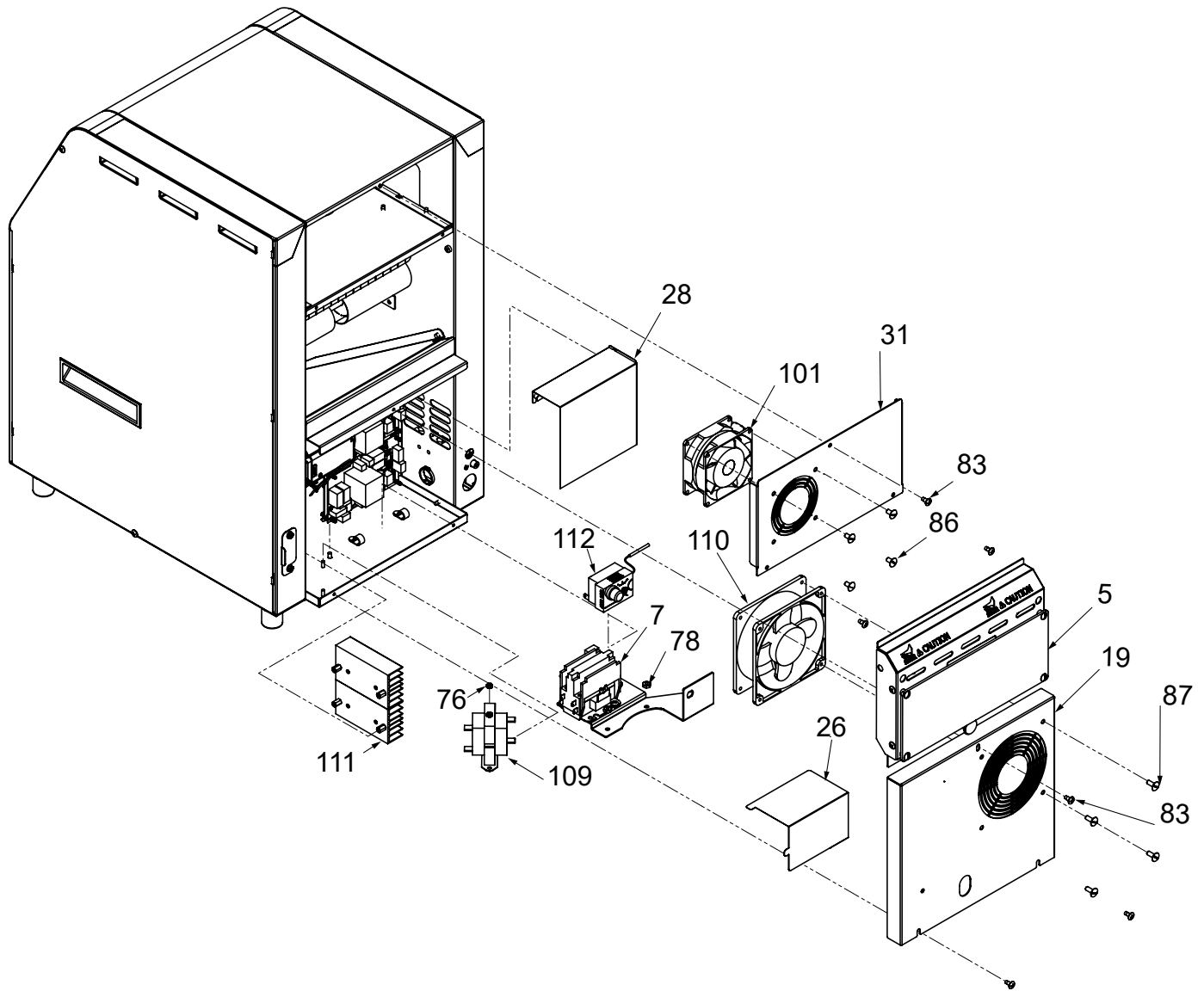
Exploded Diagram #2



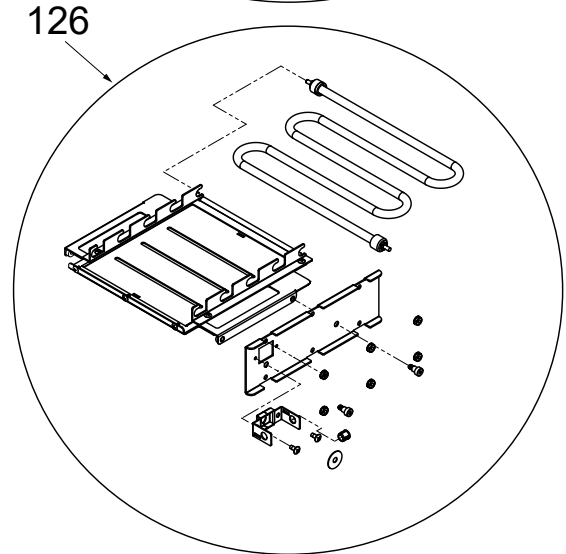
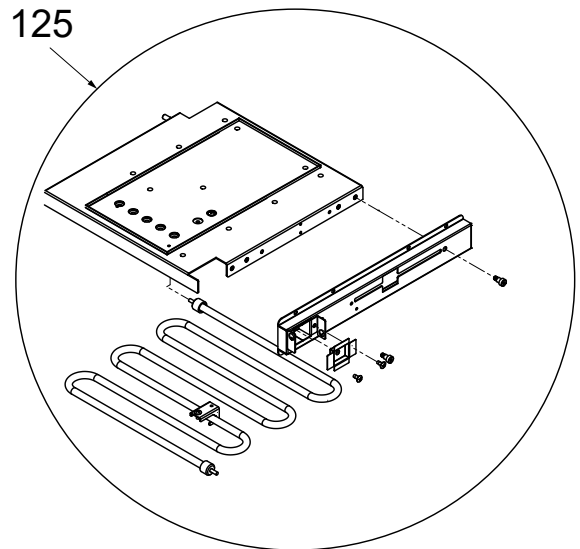
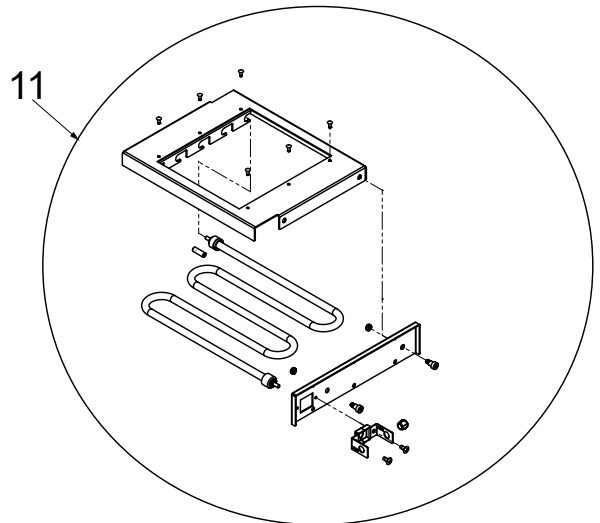
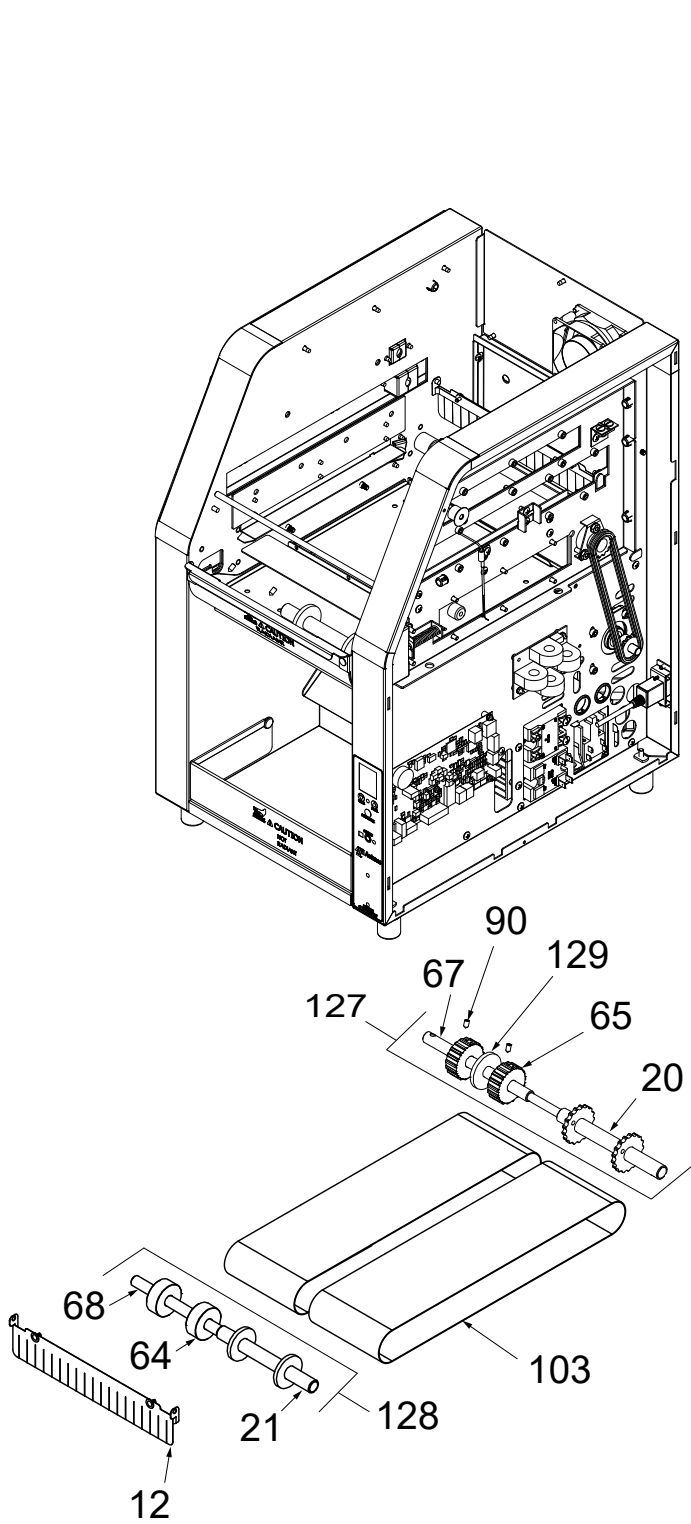
Exploded Diagram #3



Exploded Diagram #4



Exploded Diagram #5



Limited Warranty

Equipment manufactured by Antunes has been constructed of the finest materials available and manufactured to high quality standards. These units are warranted to be free from electrical and mechanical defects for a period of two (2) years from date of purchase under normal use and service, and when installed in accordance with manufacturer's recommendations. To insure continued operation of the units, follow the maintenance procedures outlined in the Owner's Manual. During the first 12 months, electromechanical parts, non-overtime labor, and travel expenses up to 2 hours (100 miles/160 km), round trip from the nearest Authorized Service Center are covered. During the second year of this warranty (months 12 - 24), the following items are covered by a Part Only warranty: Drive Motor, Motor Board, Current Sense Board, Display Board, and Main Board.

1. This warranty does not cover cost of installation, defects caused by improper storage or handling prior to placing of the Equipment. This warranty does not cover overtime charges or work done by unauthorized service agencies or personnel. This warranty does not cover normal maintenance, calibration, or regular adjustments as specified in operating and maintenance instructions of this manual, and/or labor involved in moving adjacent objects to gain access to the equipment. This warranty does not cover consumable/wear items such as Release Sheets, Conveyor Belt Chain Link removal, Belt Wraps, and Dampers. This warranty does not cover damage to the Platen due to operating the toaster without a Release Sheet or cleaning with abrasive cleansers or tools, misuse or dropping of unit. This warranty does not cover problems or failures resulting from improper/incorrect voltage supply. This warranty does not cover Travel Time & Mileage in excess of 2 hours (100 miles/160 km) round trip from the nearest authorized service agency.
2. Antunes reserves the right to make changes in design or add any improvements on any product. The right is always reserved to modify equipment because of factors beyond our control and government regulations. Changes to update equipment do not constitute a warranty charge.
3. If shipment is damaged in transit, the purchaser should make a claim directly upon the carrier. Careful inspection should be made of the shipment as soon as it arrives and visible damage should be noted upon the carrier's receipt. Damage should be reported to the carrier. This damage is not covered under this warranty.
4. Warranty charges do not include freight or foreign, excise, municipal or other sales or use taxes. All such freight and taxes are the responsibility of the purchaser.
5. This warranty is exclusive and is in lieu of all other warranties, expressed or implied, including any implied warranty or merchantability or fitness for a particular purpose, each of which is hereby expressly disclaimed. The remedies described above are exclusive and in no event shall roundup be liable for special consequential or incidental damages for the breach or delay in performance of this warranty.



Corporate Headquarters

Carol Stream, Illinois

Phone: +1 (630) 784-1000

Toll Free: +1 (800) 253-2991

Fax: +1 (630) 784-1650

China Facility

Suzhou, China

Phone: +86-512-6841-3637

Fax: +86-512-6841-3907